

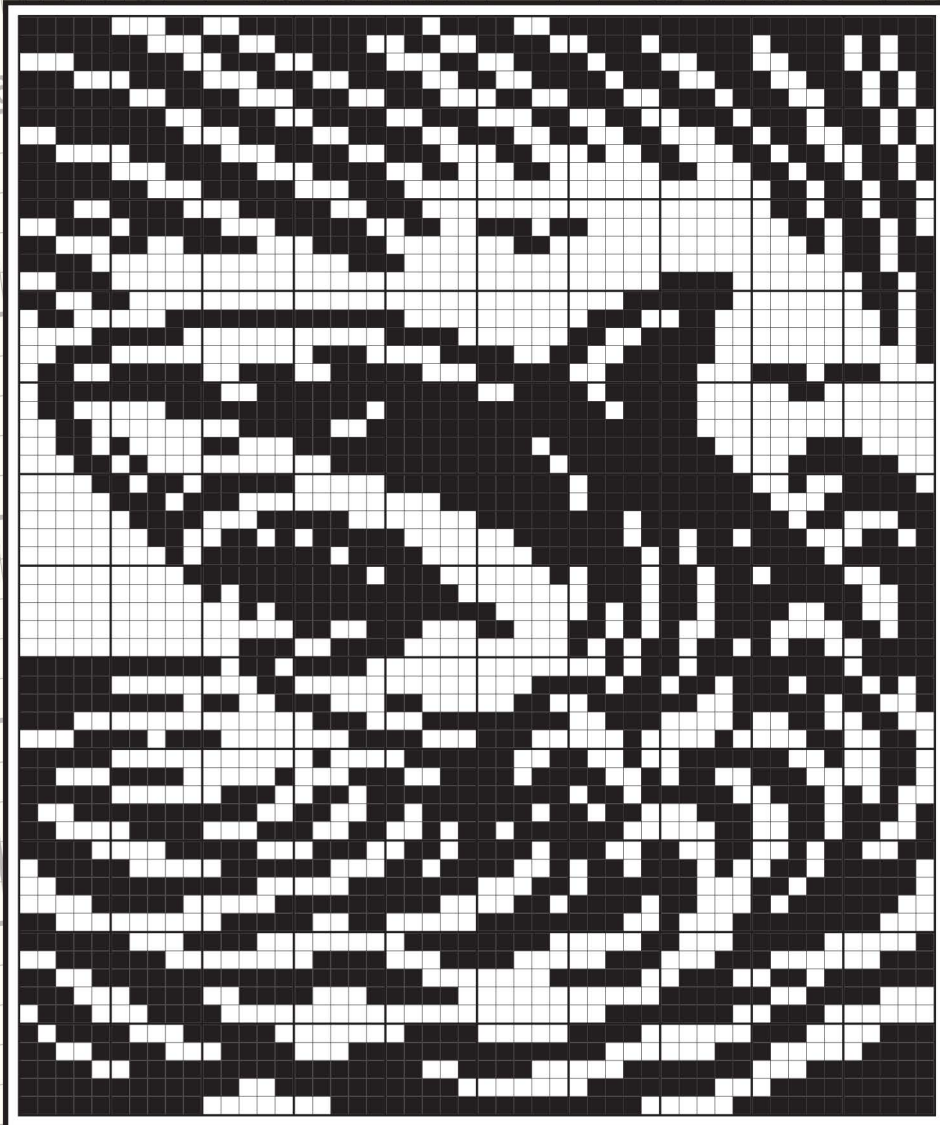
**Puzzler**

**SUPER HANJIE**

**HAS A NEW  
NAME...**

# GIANT NONOGRAM

**65+**  
**GIANT  
PUZZLES  
FOR LOGIC  
LOVERS**



ISSUE 001

**£6.20**



UK retailer off-sale date 10 June 2026

DC THOMSON

**MEGA PIXEL PUZZLE FUN!**

# GIANT NONOGRAM

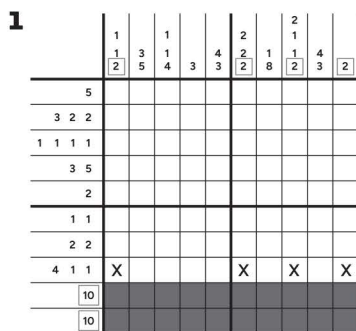
## PIXEL PUZZLES

Issue 1

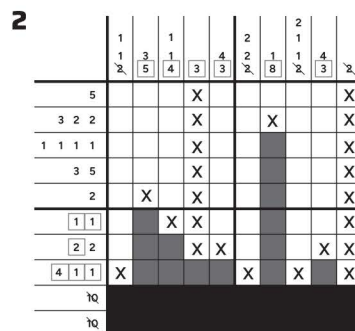
WELCOME TO GIANT NONOGRAM, AN EXHILARATING DIVE INTO THE PIXEL PERFECTION OF PICTURE-BASED LOGIC PUZZLES!

### HOW TO SOLVE THE PUZZLES

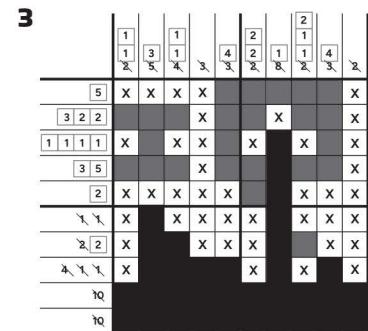
The aim is to shade in certain cells of the grid to reveal a hidden image. The numbers outside the grid tell you how many shaded cells are in that row or column. For example, if there is a 4, that means there is a group of 4 consecutive shaded cells in that row and the remainder are blank. More than one number means that there are multiple groups of shaded cells, separated by at least one unshaded cell, and they appear in the order listed – from left to right or top to bottom. So, a row with a 1 followed by a 4 will have a single shaded cell and, separately somewhere to the right of it, an additional four shaded cells together.



**STEP 1** - Begin by identifying the cells that can be filled immediately (highlighted here surrounded by grey borders). Draw an x in cells you know must remain unshaded, and put a cross through any solved number clues.



**STEP 2** - With the new fills and eliminations, immediately check for any cells that can be shaded or eliminated as a result of the previous step. Remember that there must be a gap of at least one unshaded cell between groups of consecutive shaded cells. Remember to leave gaps around any incomplete sections and come back to them later.

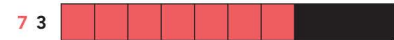


**STEP 3** - Look for gaps that either fit or eliminate themselves as options for the solution. For example, there is only one possible location for the 5 in row 1 to go, due to the cell eliminations in columns 4 and 10.

### TWO-COLOUR NONOGRAMS

The standard nonogram rules apply, as above, but with the addition of a second colour. Clues around the outside of the grid follow the standard rules, but the colour of each clue indicates the colour of that group of shaded cells. Importantly, the rule that a single unshaded cell must appear between consecutive groups of shaded cells ONLY applies to cells of the same colour - groups of consecutive shaded cells with different colours do not need to follow this rule.

Two solid colours - the one unshaded cell rule does not apply.



Two consecutive blocks of the same colour, so a gap of at least one unshaded cell is required. The subsequent coloured block followed by a block of a different colour do not need a gap.



A more complex example with two consecutive blocks of black, where at least a single unshaded cell between is required. This is followed by another block, but of a different colour, so no gap is required. Immediately afterwards, another block but of the same colour, so a gap of at least one unshaded cell is required, and so on.



The trick to solving the two-colour nonogram is to break each line down into smaller chunks based on the distribution of the different colours. This may help you find fills and eliminations easier than evaluating the puzzle as a whole.



**CONTACT DETAILS: SUBSCRIPTIONS** Visit [help.dcthomson.co.uk](http://help.dcthomson.co.uk) or call 01382 236066. Website: [www.puzzler.com](http://www.puzzler.com)  
**GENERAL** By phone: 01737 445100 By email: [enquiries@puzzlermedia.com](mailto:enquiries@puzzlermedia.com)  
**EDITORIAL** By post: Giant Nonogram Puzzles, Puzzler Media, 3rd Floor, Fonteyn House, 47-49 London Road, Reigate, Surrey RH2 9PY  
 By email: [nonograms@puzzlermedia.com](mailto:nonograms@puzzlermedia.com) By phone: 01737 445100

**COMPETITION ENQUIRIES** By phone: 01737 445100 By email: [shameem.begg@puzzlermedia.com](mailto:shameem.begg@puzzlermedia.com)

**SYNDICATION** [business@puzzlermedia.com](mailto:business@puzzlermedia.com)

**EU REPRESENTATIVE OFFICE** Puzzler Media Ltd, c/o Findmypast Ireland, Irishtown, Athlone, Co. Westmeath N37 XP52 **DISTRIBUTION** Frontline Ltd.

**EDITOR:** Greg Warren. Printed in the EU. © Puzzler Media Ltd 2026. No part of this magazine may be reproduced in any form without the written consent of the publisher ISSN 2978-8137







# LABYRINTH

			1		3								2	2	2				
			1	4	1			8	6	8	6	5	5	2					
		2	4	4	4	12		11	1	1	1	1	1	1	6	2	2	1	3
	0	4	6	6	4	4	12	5	3	1	1	1	1	1	2	6	10	13	13

3	4	2	3																
3	4	3																	
	1	1											S						
1	4	2	2																
1	4	2																	
	5	4																	
	5	2																	
	1																		
	1	2																	
	1	4																	
	1	6																	
	5	2																	
5	6	1													E				
2	3	6	1																
2	1	6	1																
	2	1	1																
	2	1	7																
	2	1	9																
	2	14																	

